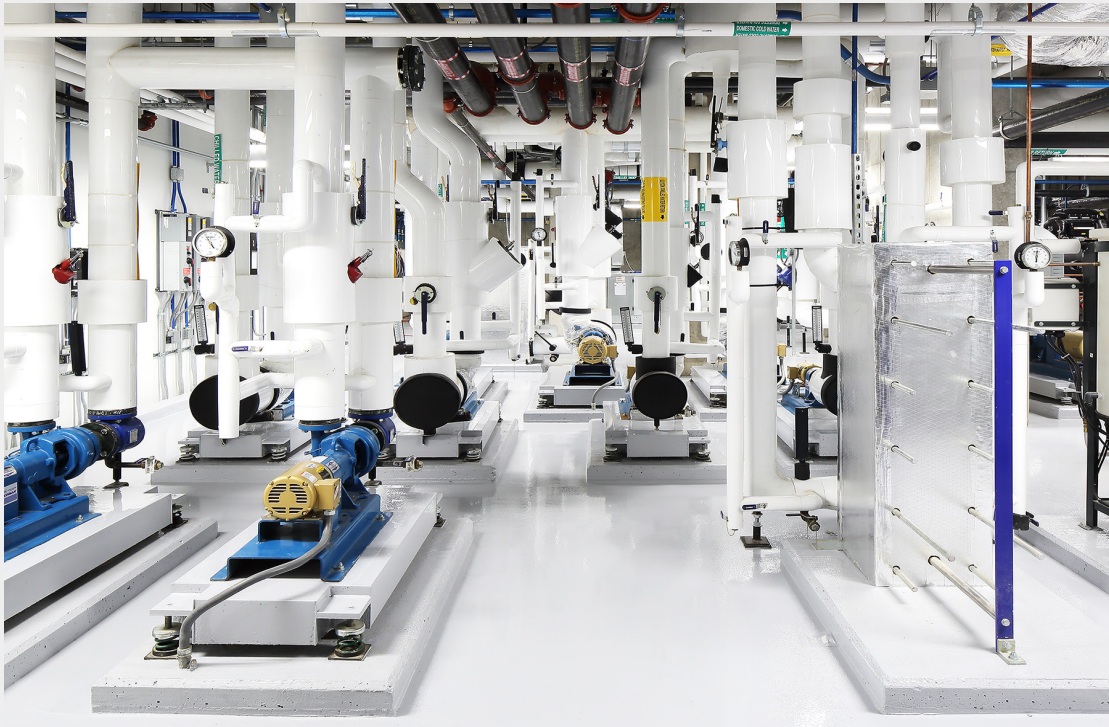


Altieri

The proven leader in architectural engineering solutions.

Altieri has provided MEPF consulting engineering systems for cultural, educational, community, commercial, and historic buildings for over 60 years. The diversity of our projects highlights not only the depth and breadth of Altieri's experience, but our imperative to engineer the best solution for each individual program, resulting in designs that are sensitive to architectural integrity, support the architectural vision, and enhance the user experience. We deliver high-quality, environmentally responsible solutions employing the most current technologies, on time and with a critical eye to managing costs. Over 30 of our projects have been award LEED® certification including: Barnes Foundation - the first major art and education center to achieve Platinum certification, Yale University Art and Architecture Building - LEED® Gold, David Zwirner Gallery - LEED® Gold and the first LEED®-certified commercial gallery in the US, and New England Conservatory Student Life and Performance Center - LEED® Gold.

Our reputation as the industry leader is based on our considerable expertise in special systems serving highly controlled, architecturally challenging environments and the seamless integration of these systems within the architectural and landscape context. Clients praise our "unrivaled multi-disciplinary expertise," "gold standard of creative design," exceptional attention to detail, and outstanding team coordination. A distinct hallmark of Altieri's success is our team's steadfast commitment to quality. With our Principals and Associate Principals involved in the design and direction of each project, our clients are assured that we are valued partners from start to finish.



Glenstone Museum © Susan Fisher Plotner/Altieri