

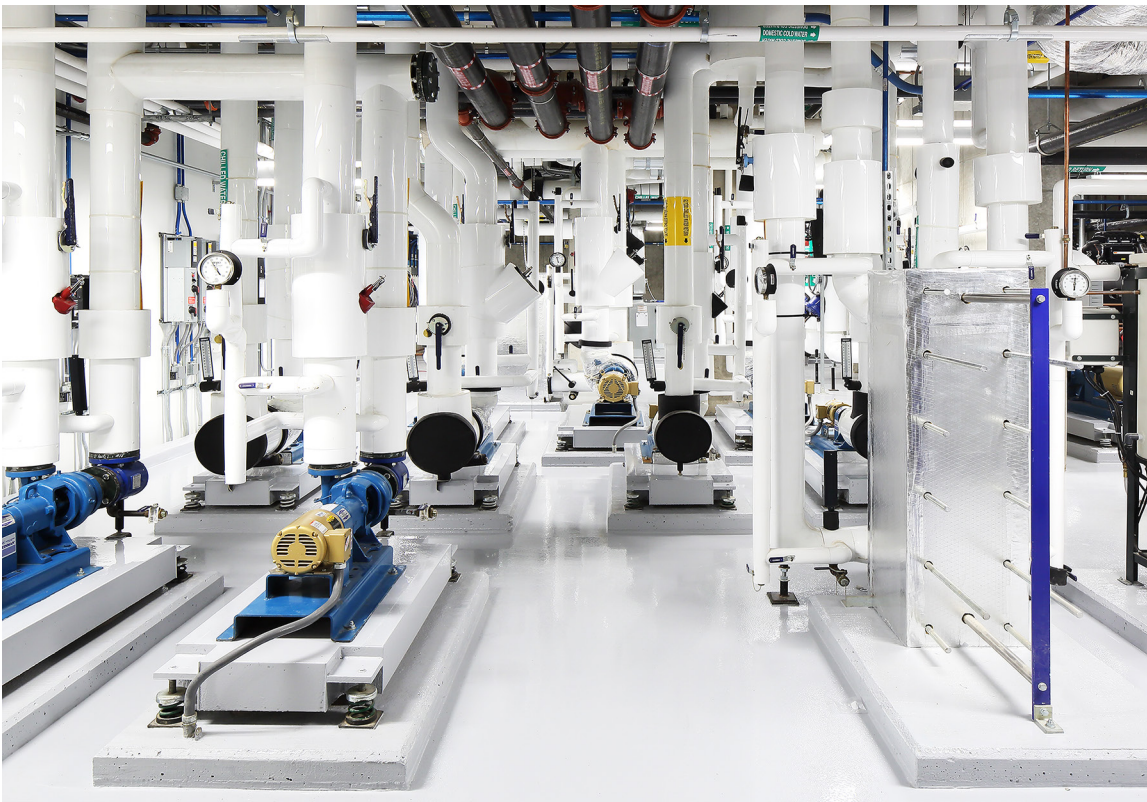
# Altieri

## Firm Profile

Altieri has provided MEPF consulting engineering systems for cultural, educational, community, commercial, and historic buildings for over 60 years. It is our mission to design inventive engineering solutions with a steadfast commitment to the creative visions of our clients, and to the quality, character, and integrity of the architecture. We deliver high-quality designs employing the most current technologies, on time and with a critical eye to managing costs.

Our reputation as an industry leader is based on our considerable expertise in special systems serving highly controlled, architecturally challenging environments and the seamless integration of these systems within the architectural and landscape context. Altieri's extensive portfolio also highlights a priority to engineer the most environmentally responsible solutions, a distinction of our work since the early 1960s. Significantly, The Getty Center received LEED® Silver certification eight years after opening, based on Altieri's designs from a period predating the introduction and implementation of the LEED® process. Today, over 30 of Altieri's projects have been awarded LEED® certification.

A Small Business Enterprise (SBE) with a deeply rooted culture of creativity, Altieri is a diverse, imaginative, and versatile team of engineers. A distinct hallmark of our success is the team's commitment to quality and the involvement of our Principals and Associate Principals in the design and direction of each project. Clients praise our "unrivaled multi-disciplinary expertise," "gold standard of creative design," exceptional attention to detail, and outstanding team coordination. With decades of individual and collective experience supporting our clients' visions and successfully meeting high profile design challenges, we continue to set the pace for the industry.



Glenstone Museum © Susan Fisher Plotner/Altieri

ALTIERI SEBOR WIEBER LLC CONSULTING ENGINEERS

31 KNIGHT STREET, NORWALK CT 06851 ALTIERISEBORWIEBER.COM, 203 866-5538